



KIARA RESERVE

RESIDENCES
LAYAN BAY – PHUKET

3-BEDROOM DUPLEX CONDOMINIUM 382 SQ.M.

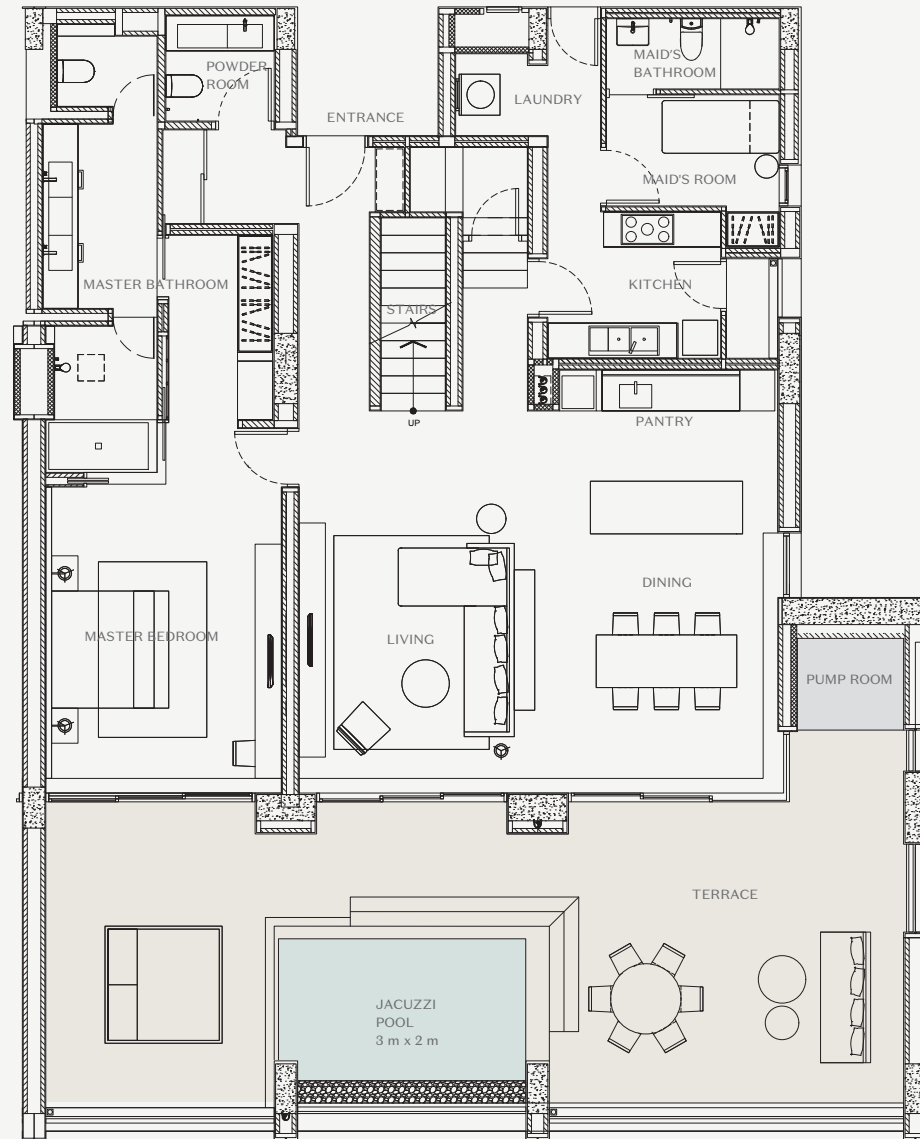
1st Floor

- Living 29.00 sq.m.
- Dining 16.50 sq.m.
- Kitchen 10.00 sq.m.
- Pantry 11.17 sq.m.
- Master Bedroom 50.00 sq.m.
- Stairs 9.40 sq.m.
- Powder Room 4.45 sq.m.
- Maid's Area 11.11 sq.m.

Total Indoor Area 158.50 sq.m.

- Terrace 66.24 sq.m.
- Jacuzzi Pool 6.00 sq.m.

Total Outdoor Area 72.24 sq.m.





KIARA RESERVE

RESIDENCES
LAYAN BAY – PHUKET

3-BEDROOM DUPLEX CONDOMINIUM 382 SQ.M.

2nd Floor

- Bedroom 1 55.72 sq.m.
- Bedroom 2 36.00 sq.m.
- Stairs 9.19 sq.m.
- Corridor 16.25 sq.m.
- Storage 3.30 sq.m.

Total Indoor Area 121.91 sq.m.

- Balcony 8.17 sq.m.

Total Outdoor Area 8.17 sq.m.

